

CommandLink Water SmartPoint

Programming Instructions

MATERIALS REQUIRED

- Sensus CommandLink
- Compatible Handheld Device equipped with:
 - Windows Mobile 6
 - GPS Receiver
 - Bluetooth
 - 50MB Memory

LINK PROGRAMMING TOOLS

(CREATE BLUETOOTH PARTNERSHIP)

1. On your Handheld select **Start > Settings > Connections**. Select **Bluetooth**. (Image 1)



Image 1

2. Click **Add New Device**.
3. A list will generate containing all Bluetooth-enabled devices in range.
4. Select your CommandLink ID (SMSCLXXXXX) from the list and click **Next**.
5. You will be prompted for a pass code. Enter 0000 (4 number zeros) and click **Next**.
6. Add a checkmark in the **Serial Port** checkbox, if it is blank and click **Finish**. (Image 2)



Image 2

7. Highlight your CommandLink ID on the screen and click the **COM Port** tab.

8. Select **New Outgoing Port**. (Image 3)



Image 3

9. On the next screen, select your CommandLink ID and click **Next**.
10. Select a **Com port** from the drop down list. The default COM8 is fine. Remember the COM Port number. Uncheck the **Secure Connection** Check Box.
11. Click **OK** to Finalize the partnership
12. The CommandLink is now connected with you Windows Mobile 6-equipped handheld via Bluetooth.

*Note this only has to be done the first-time you use the CommandLink and Handheld device together.

PROGRAMMING A FLEXNET WATER SMARTPOINT

1. Turn on the CommandLink and Handheld
2. Select **Start > FlexPro** or Click the soft key assigned to the FlexPro Application
3. When the application opens enter your User ID* and click **OK**. This will take you to the main menu.
 - *This ID is assigned to you by your supervisor.
4. From the main menu, click the **Programming** button.
5. Click the **Water Programmer** button. You are now on the Water Programmer screen
6. Verify the GPS signal. You will see the GPS tag at the top of the screen. The GPS should be in green or yellow. If the GPS tag is red, verify that the GPS is active on the Handheld and begin the steps again.

- Position CommandLink on the SmartPoint and use the strap to hold it in place. (Image 4)

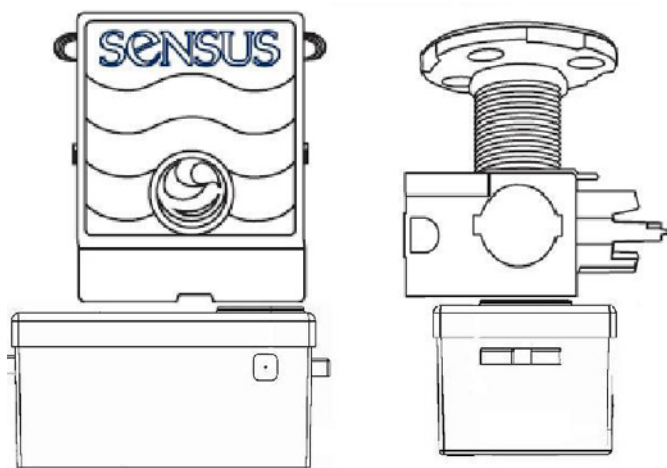


Image 4

- Click **Program**. Verify that the parameters on the screen and click **Next** to begin the programming session. The session will last approximately sixty (60) seconds.

SETTING THE DEFAULT PROGRAMMING PARAMETERS

Only users with Supervisor rights can access this menu.

- From the Main Menu, click the **Configuration** button.
- From the configuration menu, click the **Supervisor** button. You will be prompted to enter your password.
- From the supervisor menu, click **Programmers Available**.
- Click **Water Programmer Defaults**.

- To edit the field, click on the **Edit** button. Select the value you wish to change then click **OK**. (Image 5)

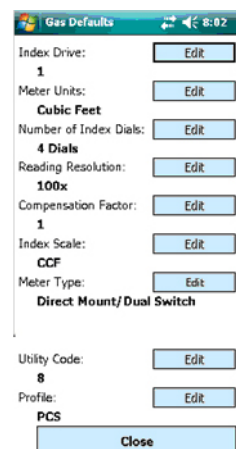


Image 5

- When finished, scroll to the bottom of the screen and click **Close**. This will save the changes made.

EDIT DEFAULT OPTIONS

- Meter Type:** Type of meter attached to the SmartPoint. Select from: *AutoDetect, Sensus TouchCoupler, Sensus 3-Wire, ProRead E-Coder* and *Not Used*.
- Meter Units:** Units of the register read. Select from: *Gallons, Liters, Cubic Feet* and *Cubic Meters*
- Reading Resolution:** Resolution of the register reading. Select from: *0.01x, 0.1x, 1x, 10x, 100x, 1000x* and *10000x*.
- Leak Detection Threshold:** The number of units that need to pass per interval for the number of intervals programmed. Select from: *(disabled), 1 count, 2 counts* and *10 counts*.
- Leak Detection Cons. Reads:** The number of intervals required for a leak to be set. Select from *24, 36, 48* and *72*.