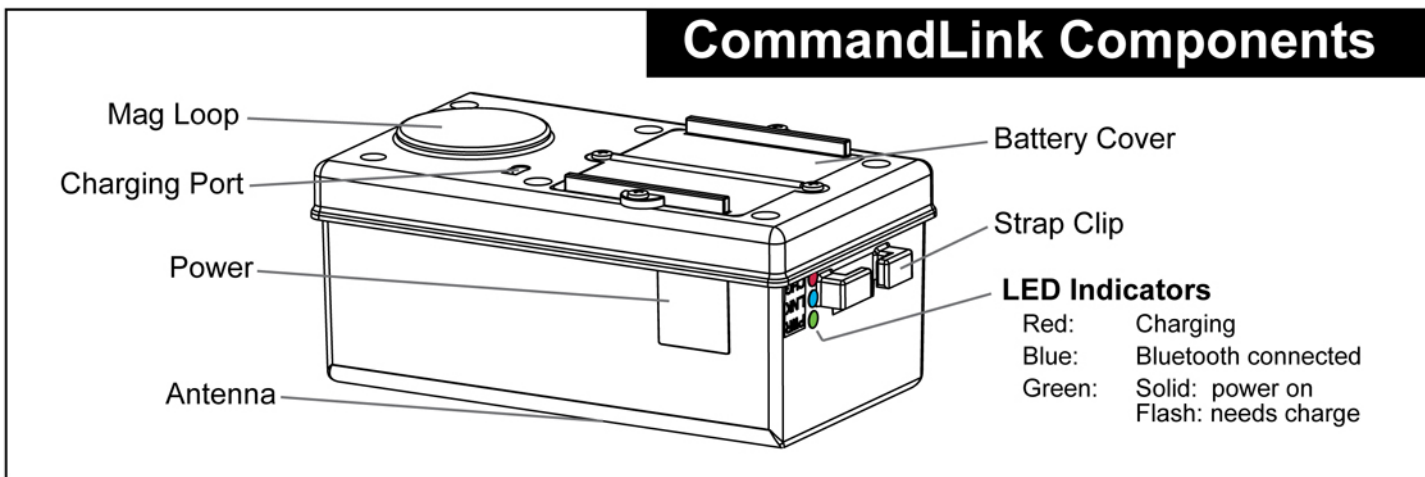


# FlexNet CommandLink

## Quick Start Guide



### Charge CommandLink Completely Before First Use

1. Plug the charging adapter into a power outlet and connect to the Charging Port located next to the Mag Loop, on top of the CommandLink.
2. The **red and green** LED indicators will illuminate, indicating the unit is charging.
3. Unplug the unit when the red LED goes dark, indicating CommandLink is fully charged.

**Note:** After charging, the CommandLink will automatically power-down after five minutes. To power-down immediately press and hold the power button located on the side of CommandLink for two seconds.

### Turn on CommandLink

1. Press the power button
2. The green LED light illuminates when CommandLink is successfully powered.

### Create Bluetooth Partnership with Windows Mobile 6 Handheld and CommandLink

1. On your Handheld select **START > SETTINGS > CONNECTIONS**. Select **BLUETOOTH**. (Image 1)
2. Click **ADD NEW DEVICE**.
3. A list of all Bluetooth-enabled devices in range will generate.
4. Select your CommandLink ID (SMSCLXXXX) from the list, then click **NEXT**.



Image 1

5. You will be prompted for a pass code. Enter **0000** (4 number 0's) and click **NEXT**.
6. Add a checkmark in the **SERIAL PORT** checkbox, if it is unchecked (Image 2) and click **SAVE**.
7. Highlight your CommandLink ID on the screen and click the COM Port tab.
8. Select **NEW OUTGOING PORT**. (Image 3)
9. On the next screen select your CommandLink ID and click **NEXT**.
10. Select a **COM PORT** from the drop down list. The default of COM8 is fine. Remember the COM Port number. Uncheck the **SECURE CONNECTION** check box. (Image 4)
11. Click **OK** to finalize the partnership
12. The CommandLink is now connected with your Windows Mobile 6-equipped Hand-Held Device (HHD) via Bluetooth.

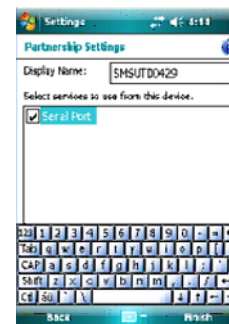


Image 2



Image 3



Image 4

## Configuration of GPS in Windows Mobile 6

1. Please refer to the user guide provided with your Handheld to verify GPS configuration steps.

## Setting up FlexPro Field Programming Application

1. On your Handheld select **START > FLEXPRO**.
2. Enter a User ID when prompted. The User ID is a number between 1 and 1023; it is assigned by the field supervisor.
3. Select **CONFIGURATION > COMMUNICATIONS > GPS**
4. Click **CONNECT**.
5. The screen will turn to green and give coordinates when the GPS is online. (Image 5)
6. Click the **CLOSE** button *three times* to return to the main menu.
7. FlexPro Field Programming Software is now configured and ready to use. To begin programming, select **PROGRAMMING** and follow the simple on-screen commands.

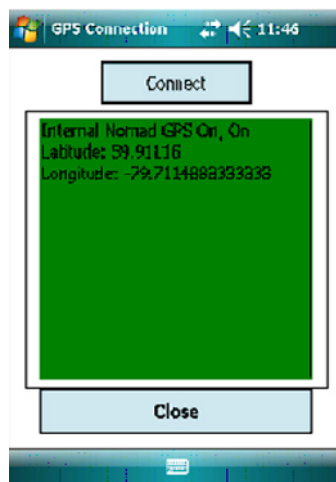


Image 5

For specific information on application operation please refer to the programming instruction documents:

(AMI-495 Water Programming and AMI – 497 Gas Programming)

## Attaching Strap to CommandLink

1. Pinch the strap and slide in between the hold downs. (Image 6)



Image 6

## Package Contents:

- FlexNet CommandLink
- USB Flash Drive
- Bungee Straps (2)
- Charging Adapter (AC/DC)
- Vehicle Charging Adapter (DC/DC)
- FlexNet CommandLink Quick Start Guide
- CommandLink FlexPro Software CD