

# CommandLink Gas SmartPoint

## Programming Instructions

### MATERIALS REQUIRED

- Sensus CommandLink
- Compatible Handheld Device equipped with:
  - Windows Mobile 6
  - GPS Receiver
  - Bluetooth
  - 50MB Memory

### LINK PROGRAMMING TOOLS

#### (CREATE BLUETOOTH PARTNERSHIP)

1. On your Handheld select **Start > Settings > Connections**. Select **Bluetooth**. (Image 1)



Image 1

2. Click **Add New Device**.
3. A list will generate containing all Bluetooth-enabled devices in range.
4. Select your CommandLink ID, SMSCLXXXXX, from the list and click **Next**.
5. You will be prompted for a pass code. Enter 0000 (4 number zeros) and click **Next**.
6. Add a checkmark in the **Serial Port** checkbox, if it is blank and click **Finish**. (Image 2)



Image 2

7. Highlight your CommandLink ID on the screen and click the **COM Port** tab.

8. Select **New Outgoing Port**. (Image 3)

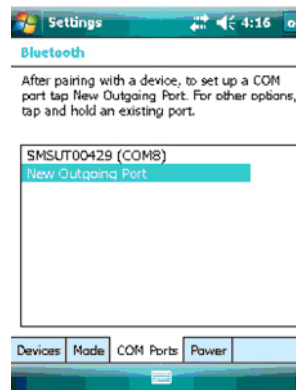


Image 3

9. On the next screen, select your CommandLink ID and click **Next**.
10. Select a **Com port** from the drop down list. The default COM8 is fine. Remember the COM Port number. Uncheck the **Secure Connection** Check Box.
11. Click **OK** to Finalize the partnership
12. The CommandLink is now connected with you Windows Mobile 6-equipped handheld via Bluetooth.

\*Note this only has to be done the first-time you use the CommandLink and Handheld device together.

### PROGRAMMING A FLEXNET GAS SMARTPOINT

1. Turn on the CommandLink and Handheld
2. Select **Start > FlexPro** or Click the soft key assigned to the FlexPro Application
3. When the application opens enter your User ID\* and click **OK**. This will take you to the main menu.
  - \*This ID is assigned to you by your supervisor.
4. From the main menu, click the **Programming** button.
5. Click the **Gas Programmer** button. You are now on the Gas Programmer screen
6. Verify the GPS signal. You will see the GPS tag at the top of the screen. The GPS should be in green or yellow. If the GPS tag is red, verify that the GPS is active on the Handheld and begin the steps again.

- Position CommandLink using the strap to affix to SmartPoint. (Image 4)

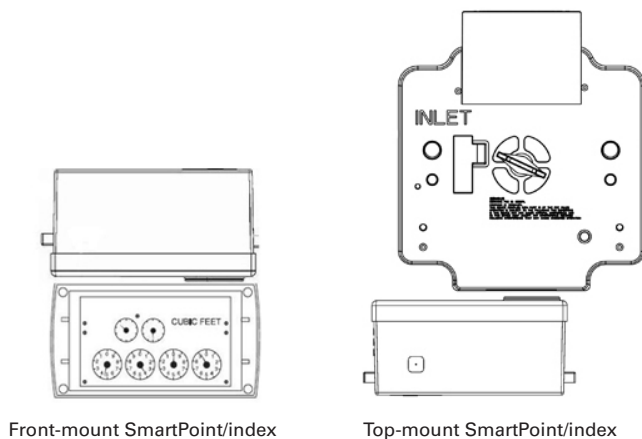


Image 4

- Click **Program**. Verify that the parameters on the screen and click **Next** to begin the programming session. The session will last approximately sixty (60) seconds.

## SETTING THE DEFAULT PROGRAMMING PARAMETERS

**Only users with Supervisor rights can access this menu.**

- From the Main Menu, click the **Configuration** button.
- From the configuration menu, click the **Supervisor** button. You will be prompted to enter your password.
- From the supervisor menu, click **Programmers Available**.
- Click **Gas Programmer Defaults**.
- To edit the field, click on the **Edit** button. Select the value you wish to change then click **OK**. (Image 5)

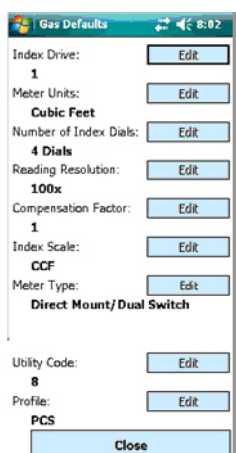


Image 5

**NOTE:** the Compensation Factor for pulse units is adjusted automatically by CommandLink *before* the SmartPoint is programmed. During verification, the Compensation Factor shown on the display will be the result of the meter's Compensation Factor divided by the pulses per revolution. (Example: A compensation factor of 1 that is divided by 2 pulses per revolution will display a Compensation Factor of 0.500.)

- When finished, scroll to the bottom of the screen and click **Close**. This will save the changes made.

## EDIT DEFAULT OPTIONS

- Meter Type:** Select from: *Remote Mount, Single Switch, or Direct Mount, Dual Switch*.
- Number of Index Dials:** This is the number of significant index dials.  
Select from: *2 Dials, 3 Dials, 4 Dials, 5 Dials, 6 Dials, 7 Dials, or 8 Dials*.
- Meter Units:** This is the unit of measure of the meter.  
Options: *Cubic Feet, Cubic Meters, Liters, and Gallons*.
- Reading Resolution:** The Reading Resolution multiplied by the Reading Units is the volume unit of the Meter Reading. For example, if the Reading Units are Cubic Feet, and the Resolution is 100x, then a Reading of 1234 represents a volume of 123,400 CF (1234 CCF).  
Select from: *1x, 10x, 100x, and 1000x*.
- Index Drive:** The Index Drive is the number of volume measurement units (cubic feet or cubic meters) per revolution in direct mount or per pulse output in remote mount.  
Select from: *1, 2, 5, 10, 20, 25, 50, 100, 250, 500, and 1000*.
- Index Scale:** The Index Scale represents Hundreds of Cubic Feet, Thousands of Cubic Feet, or Cubic Meters.  
Select from: *CCF, MCF, and Cubic Meters*.
- Compensation Factor:** The Compensation Factor is a number between 1 and 4 used to determine pulse count on Temperature/Pressure compensated indexes.
- Utility Code:** The Utility Code is used to separate the meters from one utility from the meters of another utility with the FlexNet network.  
Select from: *0 to 15*.
- Pulse Per Revolution:** The number of pulses per revolution of the Form A pulsing device attached to the meter.  
Select from: *1, 2, 5, 10, 20, 50, and 100*. (This option is only active when the *Remote Mount, Single Switch* Meter Type is selected.)