

Vehicle Gateway Base Station

Quick Start Guide

VERIFY COMPONENTS

The Vehicle Gateway Base Station (VGB) package includes the following components. If any of the components are missing, contact Sensus.



Vehicle Gateway Base Station (VGB) Components

CONNECT COMPONENTS TO THE VGB



1. Position the VGB in a secure location inside the vehicle.
2. Connect the USB cord from the USB port on the VGB to the USB Port on the laptop computer.
3. Secure the magnetic VGB antenna to the flat surface of the vehicle roof.
4. Open the passenger side window of the vehicle and run the cable through it. Ensure that the cable will not interfere with the driver's operation of any vehicle controls.
(Note: DO NOT close the antenna cable in the vehicle door as it can damage the cable.)
5. Connect the power cable from the Power port on the VGB to the vehicle's 12V outlet/cigarette lighter.

STARTING UP THE VGB AND AUTOVU SOFTWARE

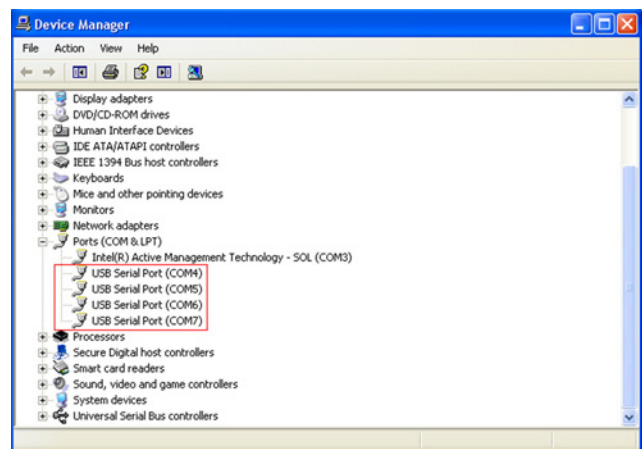
1. Turn on the laptop computer.
2. Open the AutoVu software by double-clicking the icon on the desktop.
3. Once AutoVu is open, turn on the VGB by pressing the red toggle switch.
4. Set up communications between the VGB and laptop computer.

SETTING VGB COMMUNICATIONS IN AUTOVU

1. Before beginning, ensure that the virtual comport drivers have been pre-installed on the laptop computer.
(NOTE: The VGB must be powered and connected to the PC in order to see these comports.)
2. If the virtual comports have been installed, skip to Step 5.

If the virtual comport drivers have not been installed, they can be found under the AUTOVU\ Support folder. The file is named CDM 2.04.16.exe. Or, the drivers can be downloaded from: <http://www.ftdichip.com/Drivers/VCP.htm>

The four virtual comports will be listed in the Device Manager under the **Ports (COM & LPT)** node [Image 1]. They are labeled "USB Serial Port."



[Image 1 – Device Manager window showing virtual comport drivers]

- Using AutoVu software, navigate to the VGB tab of the serial communications screen. Set the ports as follows:

- Click the Save button to save the comport settings.
- The VGB is now ready to import the meter reading route and begin reading.
- If you have any questions about meter reading with AutoVu software, please refer to the AutoVu Reading Procedures, included with the software.

VGB TRANSMIT PARAMETERS

Parameter	Description
Comport	Set to 1st Virtual ComPort (COM4)
Baud Rate	19200
Profile	Static setting to view RF Profile

VGB RECEIVE PARAMETERS CPC1

Parameter	Description
Comport	Set to 2nd Virtual ComPort (COM5)
Baud Rate	19200
Frequency	Fixed based on profile

VGB RECEIVE PARAMETERS CPC0

Parameter	Description
Comport	Set to 3rd Virtual ComPort (COM6)
Baud Rate	19200
Frequency	Fixed based on profile

VGB AUXILIARY PARAMETERS

Parameter	Description
Comport	Set to 4th Virtual ComPort (COM7)
Baud Rate	19200
Power Level	Output power from VGB. 0(low) to 3(high)